

CAPTIVE BOLT STANNER

DESCRIPTION AND FUNCTION

This device is used for slaughtering of catles and another animals.

The device consist of following main parts:

- shutter with striking mechanism
- guiding tube with piston.

Both parts are put together by trapezoidal thread. Guiding pipe is equiped with piston guide (pos.no. 4), cartridge chamber (pos. no. 2) and piston (pos. no. 5).

Weight 2,30 kg
Lenght 320 mm

INSTRUCTIONS FOR PROPER FUNCTION OF DEVICE

1. Cleaning – see respective article.
2. Idle shooting is forbidden, device will be damaged. It is necessary use scantling or thick board for test shots.
3. After each 50 shots it is recommended to check, turn out or change rubber insert (pos. no. 15) and clean up the rubber dust from guiding pipe (pos. no.3). so that the proper work of device is ensured.

It can be caused damaged of device by non-performance of those instructions.

DAILY INSPECTION OF DEVICE

Inspection must be done daily before start of work.

Checking if piston (pos. no. 5) is moving smoothly:

- a) unscrew shutter (breech mechanism - pos. no.1)
- b) by suitable tool (metal or wooden rod) press through the cartridge chamber against the cilinder ending of piston. By this the piston is released from flexible fixation (from its initial position). Piston movement must be smooth. If pistons grabs, the guiding tube must be dissassembled and cleaned up. If the end of rubber insert (pos. no 15) is deformed or crackled, it must be changed.
- c) If piston is deformed or rusted, it must be changed.
- d) push the piston back to the initial position by end of trigger level (part 1 of picture). Piston must be cougth without extraordinary effort by the spring washer (pos. no. 14) at its initial position.

APPLICATION OF DEVICE

Push the piston back to the initial position by end of trigger level (part 1 of picture). Piston must be caught without extraordinary effort by the spring washer (pos. no. 14) at its initial position.

It is necessary before opening of device to withdraw slightly the cocking disk (pos. no. 12) back so that the trigger lever can snap under cocking disk (parts 2 of picture). By this the trigger lever is released from groove in the cartridge chamber (the nose in the back part of trigger lever is under stretching disk) and shutter can be unscrewed.

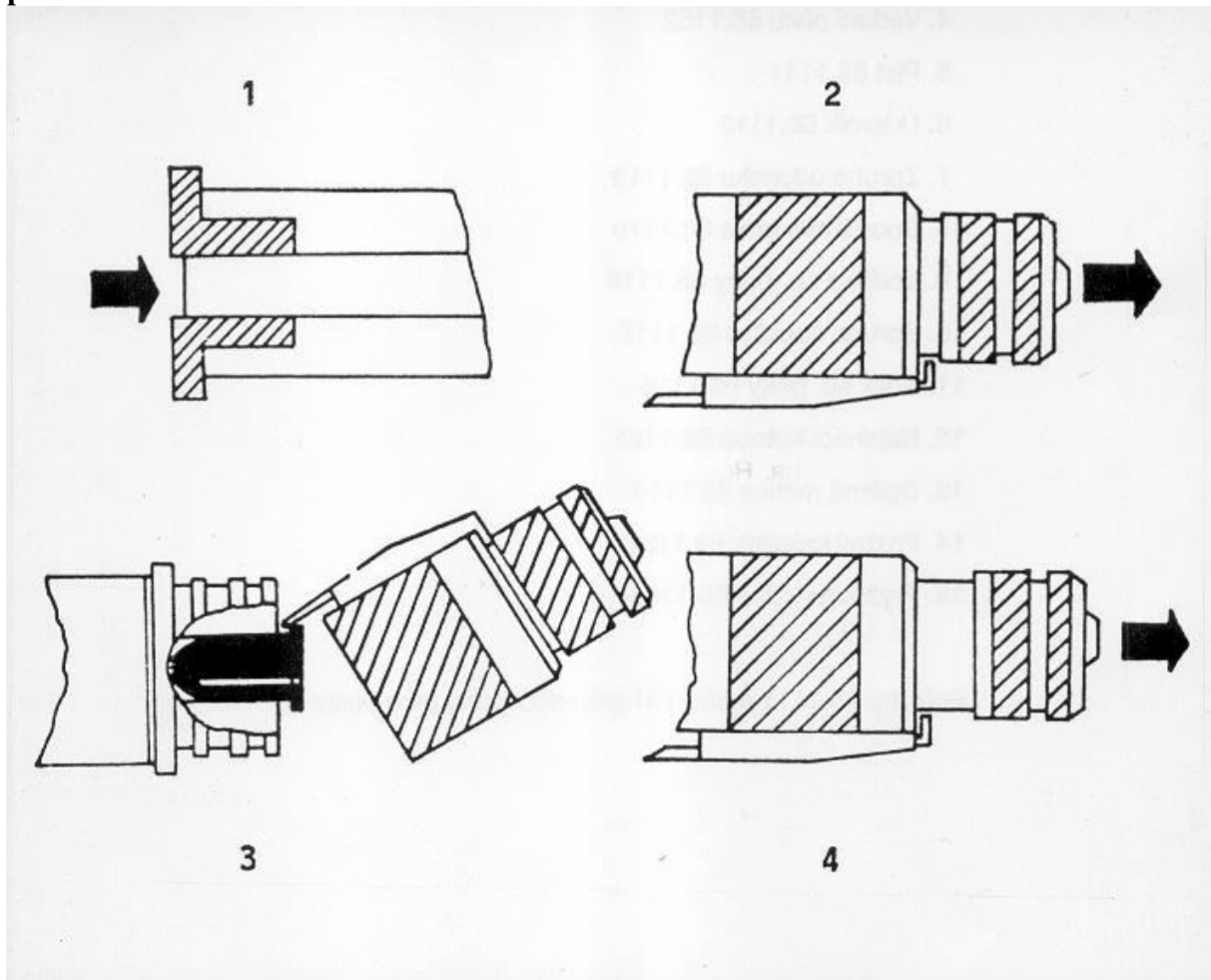
Insert the cartridge in the cartridge chamber and screw on the shutter (parts 3 of picture).

Stretch the striking mechanism by withdrawing the cocking disc backwards so that the firing pin (pos. no. 6) is latched by trigger lever (parts 4 of picture).

Put device at 5 mm distance from animals head, press trigger lever till the cartridges is fired. Then the piston is pulled back by elasticity of the rubber insert (pos. no. 15). After it unscrew shutter (pos. no. 1) and release out fired cartridge by the end of trigger lever.

If the piston of charged device is out of its initial position, the shutter must be unscrewed, than the piston pressed back and the shutter screwed back again.

picture



Only proper cartridges cal. 9 mm are allowed for use:

Sellier and Bellot, model 9x20, SB35122, energy 360 J

It is strictly forbidden to use another cartridges.

Do not charge the device and stretch the striking mechanism until the animal is ready for slaughtering.

SAFETY INSTRUCTIONS

If the fire shall not be done, the cartridge must be removed from chamber immediately. When device drops down then the guide (pos. no. 9) of trigger lever avoids the spontaneous shot, its shape has been chosen in such way to prevent from it. Device must be discharged before any handling or cleaning.

The device couldn't be fired when shutter is screwed improperly. Safety elements are created by trigger lever and its matched groove in the body of cartridge chamber.

It is forbidden to handle with charged device outside of place destined for slaughtering.

It is forbidden to use this device for another purposes than for slaughtering.

It is allowed to use this device for slaughtering only.

CLEANING

Device must be clean up every day, even if one cartridge per day was fired only. Unscrew the shutter, clean up the thread and surface from rests of powder and dirt.

Unscrew piston guide (pos. no. 4), move out the piston (pos. no. 5) and rubber insert (pos. no. 15). All parts including guiding tube (pos. no. 3) and cartridge chamber (pos. no 2) must be wiped to dry. Check function of the spring washer (pos. no. 14) and if the piston can be flexible fixed in its initial position. Use soft brushes for cleaning of cylindrical surfaces.

Oil all cleaned parts with mineral oil properly (the best is the Konkor 101).

It is forbidden to use animal oils.

Assemble the device.

Before use the device must be disassembled, all parts wiped dry and assembled again. Pay attention that all parts and screw-bolts are tightened.

Disassembling and cleaning of the larger range can be done by trained technician only.

TROUBLESHOOTING, CAUSES AND REMEDIES

- a) cartridge isn't fired out
wait for 30 sec and removed cartridge
don't use more removed wrong cartridge
causes

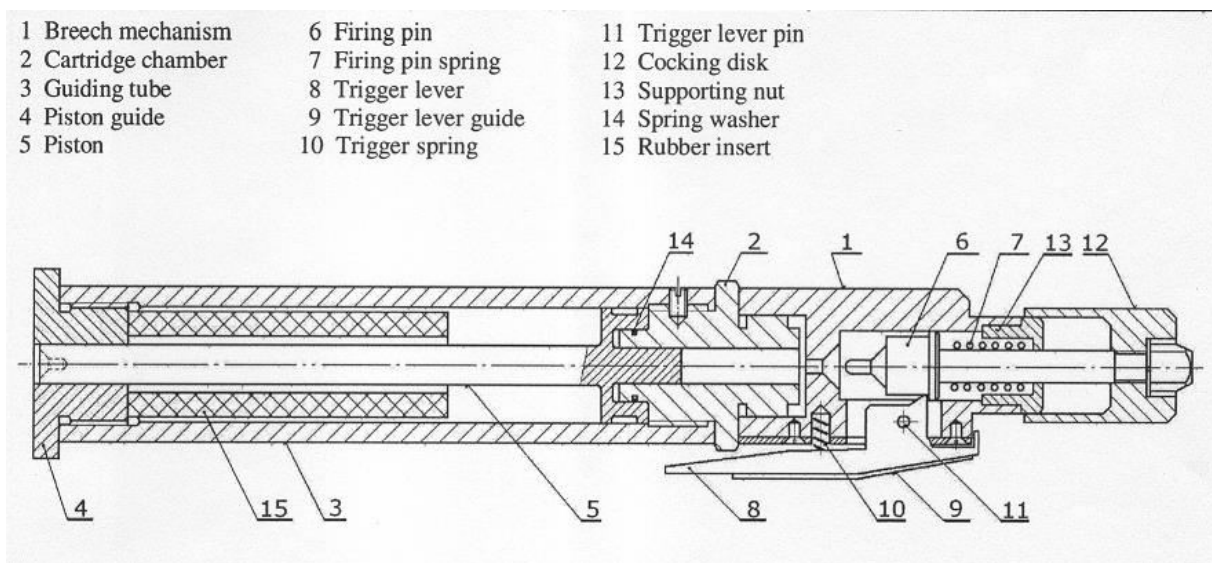
- weak firing pin spring (pos. no.7)
 - deformed firing pin (pos. no. 6)
- Replacing shall be done by authorized technician.

b) piston left in the animal's head
causes

- rubber insert is worn (must be changed)
- polluted inside space of device (clean up)
- deformed piston (change it)

c) piston, being moved inside to the device, can't be fixed in its initial position
causes

- polluted inside space of device (clean up)
- wrong spring washer (pos. no. 14) (change it, enclosed to basic delivery)



Waranty period: 12 months

The Seller doesn't responsible for claims caused by improper handling and use of incorrect cartridges.

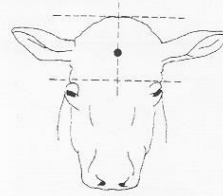
The device is atested with C.I.P. mark, acc. to the Czech law.

Number of Uniform Industrial Products and Branches Classification
(UIPBC) 545 421 568 100

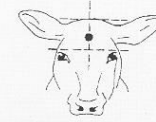
Drawings and description of specified points on animal's head where a mechanical slaughtering device should be placed in order to execute stunning shot

Cattle (*except bulls and calves*)

The muzzle should be placed in the right angle towards the frontal bone at the place which is situated in the middle between the highest point of the skull and the line connecting eyes.



Side view (Cattle)



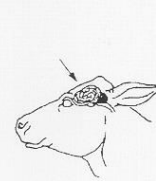
Side view (Calves)

Bulls

The muzzle should be placed in the right angle towards the frontal bone at the place which is situated in the middle between the highest point of the skull and the line connecting eyes. The device should be placed to animal's forehead firmly, max. 1cm from the fornix edge in the middle of the skull.



Front view (Cattle)



Front view (Calves)

Calves

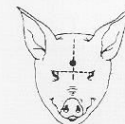
The muzzle should be placed in the right angle towards the frontal bone nearer to the line connecting eyes than in case of the cattle.

Pigs (*except boars*)

The muzzle should be placed in the right angle towards the frontal bone, about 2.5cm above the line connecting eyes.



Side view (Pigs)



Front view (Pigs)

Boars

The muzzle should be placed in the right angle towards the frontal bone, about 5cm above the line connecting eyes towards one side of the fornix in the middle of the skull.



Side view (Hornless sheep)



Front view (Hornless sheep)

Sheep

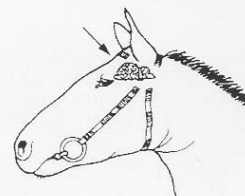
Hornless sheep – the muzzle should be placed on the highest point of the skull and it is aimed at the jaws. Horny sheep – the muzzle should be placed right behind the fornix between horns and it is aimed at chops.



Side view (Horny goats)

Goats

Hornless goats – the muzzle should be placed on the highest point of the skull and it is aimed at the jaws. Horny goats – the muzzle should be placed right behind the fornix between horns and it is aimed at chops. Kids - the muzzle should be placed in the right angle towards the frontal bone in the same way as in case of calves.



Side view (Horses)

Horses

The muzzle should be placed in the right angle towards the frontal bone above the intersection point of the lines connecting eyes and ears.

